

**MGC27016 antibody - N-terminal region**  
**Rabbit Polyclonal Antibody**  
**Catalog # AI11848****Specification**

---

**MGC27016 antibody - N-terminal region - Product Information**

Application	WB, IHC
Primary Accession	<a href="#">Q8TBY0</a>
Other Accession	<a href="#">NM_144979</a> , <a href="#">NP_659416</a>
Reactivity	Human, Mouse, Rat, Rabbit, Zebrafish, Pig, Horse, Bovine, Dog
Predicted Host	Rat, Bovine, Dog
Clonality	Rabbit
Calculated MW	Polyclonal 59kDa KDa

**MGC27016 antibody - N-terminal region - Additional Information****Gene ID** 166863**Alias Symbol** CT68, MGC27016**Other Names**

Probable RNA-binding protein 46, Cancer/testis antigen 68, CT68, RNA-binding motif protein 46, RBM46

**Format**

Liquid. Purified antibody supplied in 1x PBS buffer with 0.09% (w/v) sodium azide and 2% sucrose.

**Reconstitution & Storage**

Add 50 ul of distilled water. Final anti-MGC27016 antibody concentration is 1 mg/ml in PBS buffer with 2% sucrose. For longer periods of storage, store at 20°C. Avoid repeat freeze-thaw cycles.

**Precautions**

MGC27016 antibody - N-terminal region is for research use only and not for use in diagnostic or therapeutic procedures.

**MGC27016 antibody - N-terminal region - Protein Information****Name** RBM46**Function**

Essential for male and female fertility, playing a crucial role in regulating germ cell development by ensuring the proper progression of meiosis prophase I (By similarity). Regulates mitotic-to-meiotic transition in spermatogenesis by forming a complex with MEIOC and YTHDC2 which recognizes and down-regulates mitotic transcripts for a successful meiotic entry (By similarity). Required for normal synaptonemal complex formation during meiosis, binding meiotic cohesin subunit mRNAs containing GCCUAU/GUUCGA motifs in their 3'UTRs regions and positively regulating their translation (By similarity). Required for spermatogonial differentiation in both

developing and adult testis (By similarity).

#### **Cellular Location**

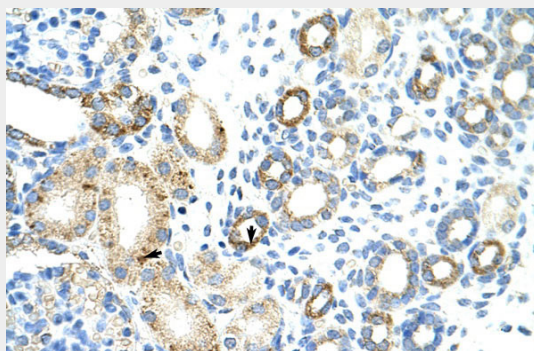
Cytoplasm {ECO:0000250|UniProtKB:P86049}.

### **MGC27016 antibody - N-terminal region - Protocols**

Provided below are standard protocols that you may find useful for product applications.

- [Western Blot](#)
- [Blocking Peptides](#)
- [Dot Blot](#)
- [Immunohistochemistry](#)
- [Immunofluorescence](#)
- [Immunoprecipitation](#)
- [Flow Cytometry](#)
- [Cell Culture](#)

### **MGC27016 antibody - N-terminal region - Images**



Rabbit Anti-MGC27016 Antibody  
Paraffin Embedded Tissue: Human Kidney  
Cellular Data: Epithelial cells of renal tubule  
Antibody Concentration: 4.0-8.0 µg/ml  
Magnification: 400X



WB Suggested Anti-MGC27016 Antibody Titration: 0.2-1 µg/ml  
Positive Control: Jurkat cell lysate

### **MGC27016 antibody - N-terminal region - References**

Strausberg, R.L., (2002) Proc. Natl. Acad. Sci. U.S.A. 99 (26), 16899-16903  
Reconstitution and Storage: For short term use, store at 2-8°C up to 1 week. For long term storage, store at -20°C in small aliquots to prevent freeze-thaw cycles.